

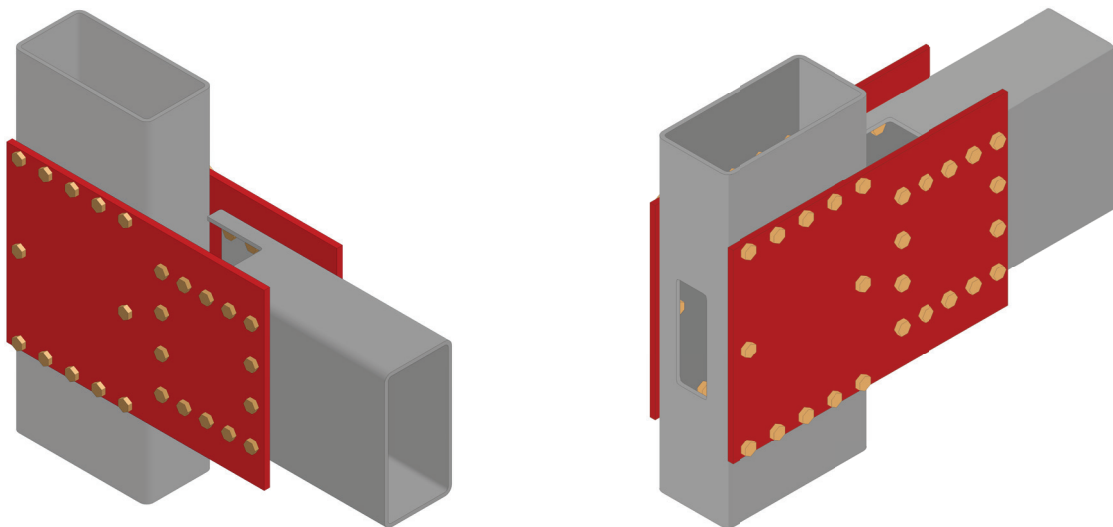
SIDEPLATE[®] POWERED BY **MiTek**

In 1995 SidePlate connection designs were introduced to the market to fill a need created after the Northridge CA, earthquake. The connection design required both shop and field welding, proving to be very safe, but not very fast to build.

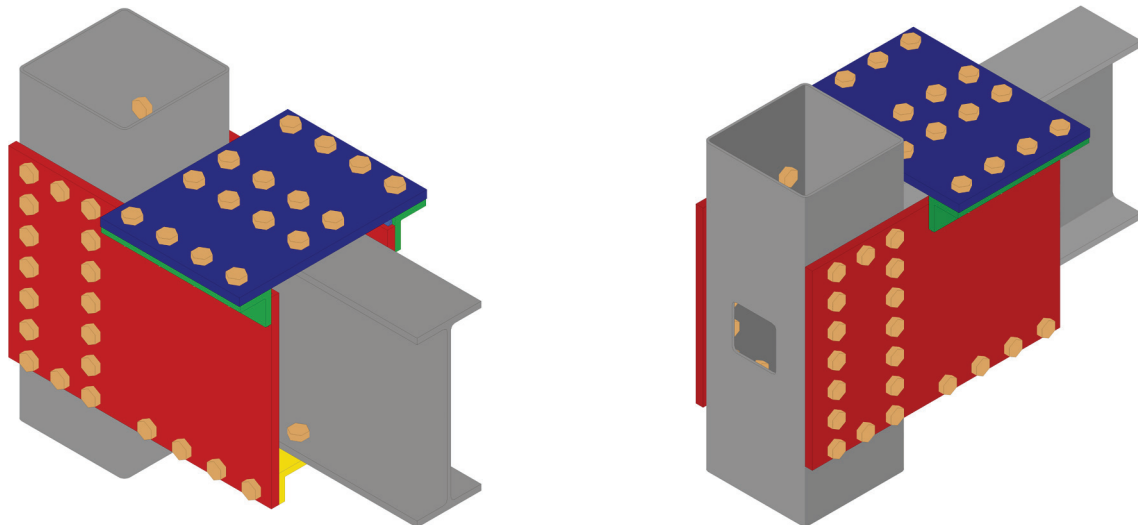
In 2013 SidePlate introduced a field-bolted connection to help speed up the building process and in all areas of the country it has been a big hit. So it only seems right that on our 25th Anniversary as part of our commitment to Powered by MiTek that we do something big--like introducing two all-bolted connection designs!

On July 1, 2020 all of the details and tools will be available, but for now, here is a quick look at both the Wide-Flange All-Bolted and the HSS All-Bolted Connection designs.

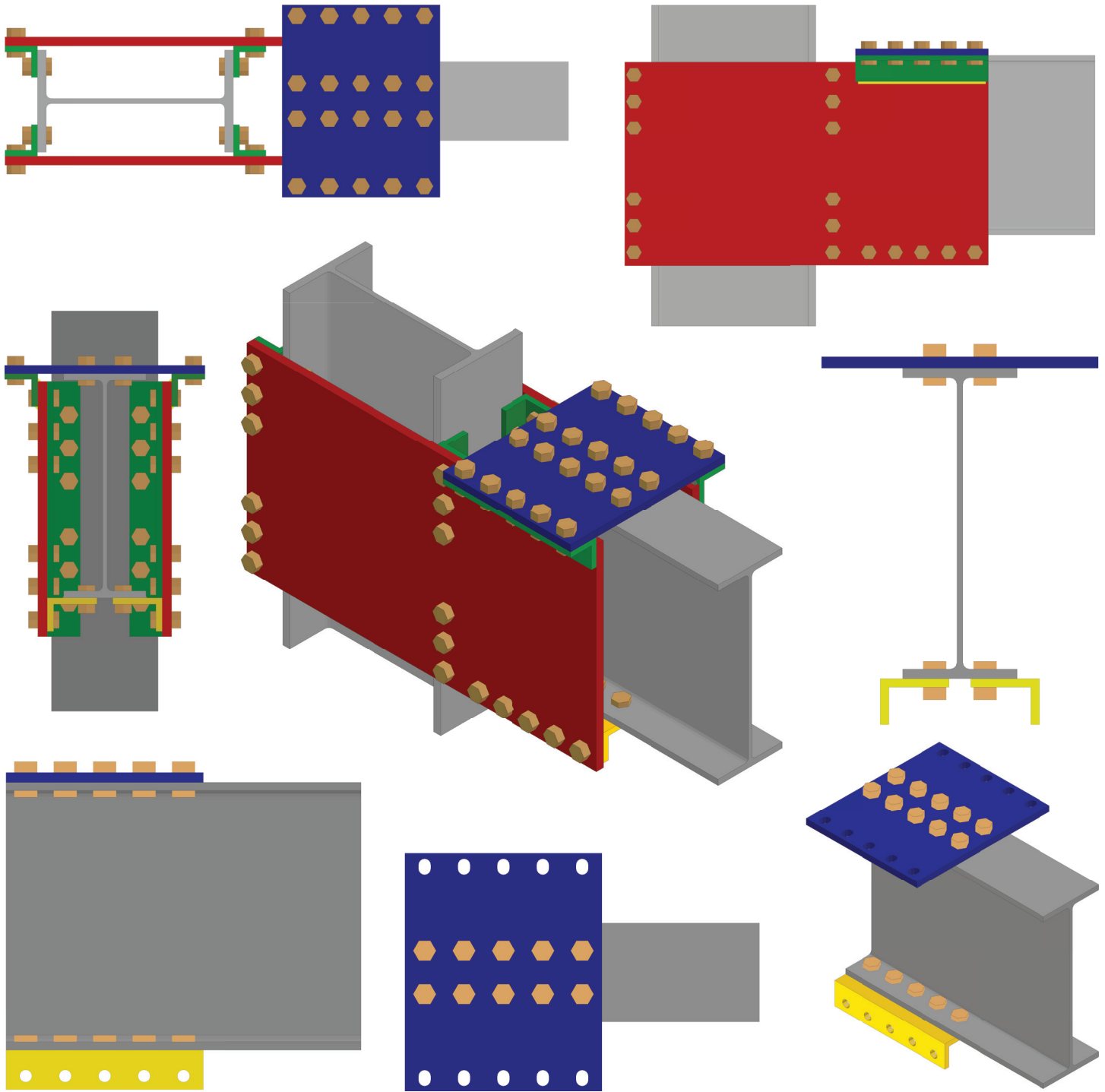
HSS to HSS All-Bolted Connection Designs



HSS to Wide Flange All-Bolted Connection Designs



Wide Flange All-Bolted Connection Designs



For any questions contact your Regional Engineer