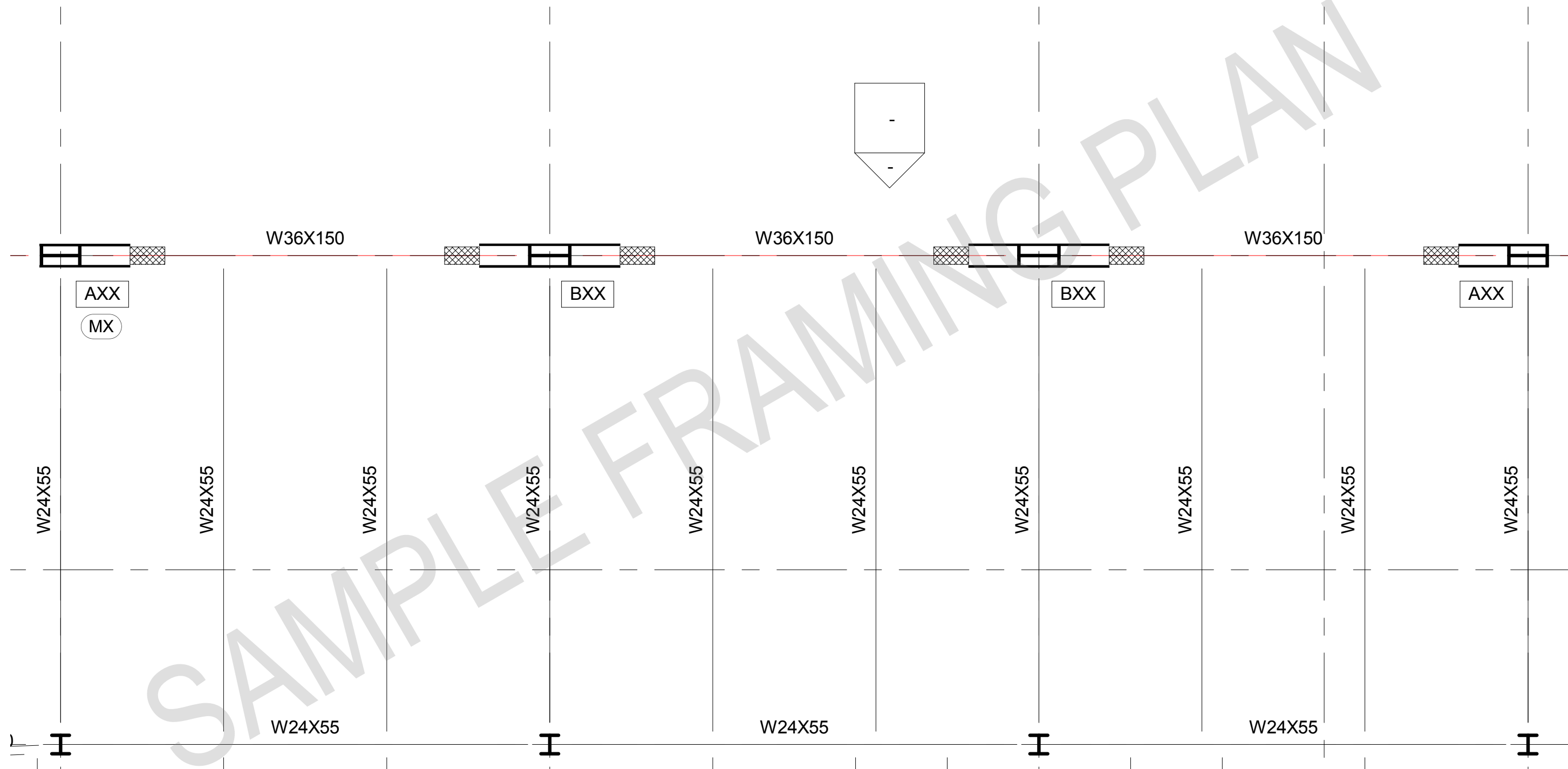


AXX

INDICATES SIDEPLATE CONNECTION PER SHEETS X/XX - X/XX

MX

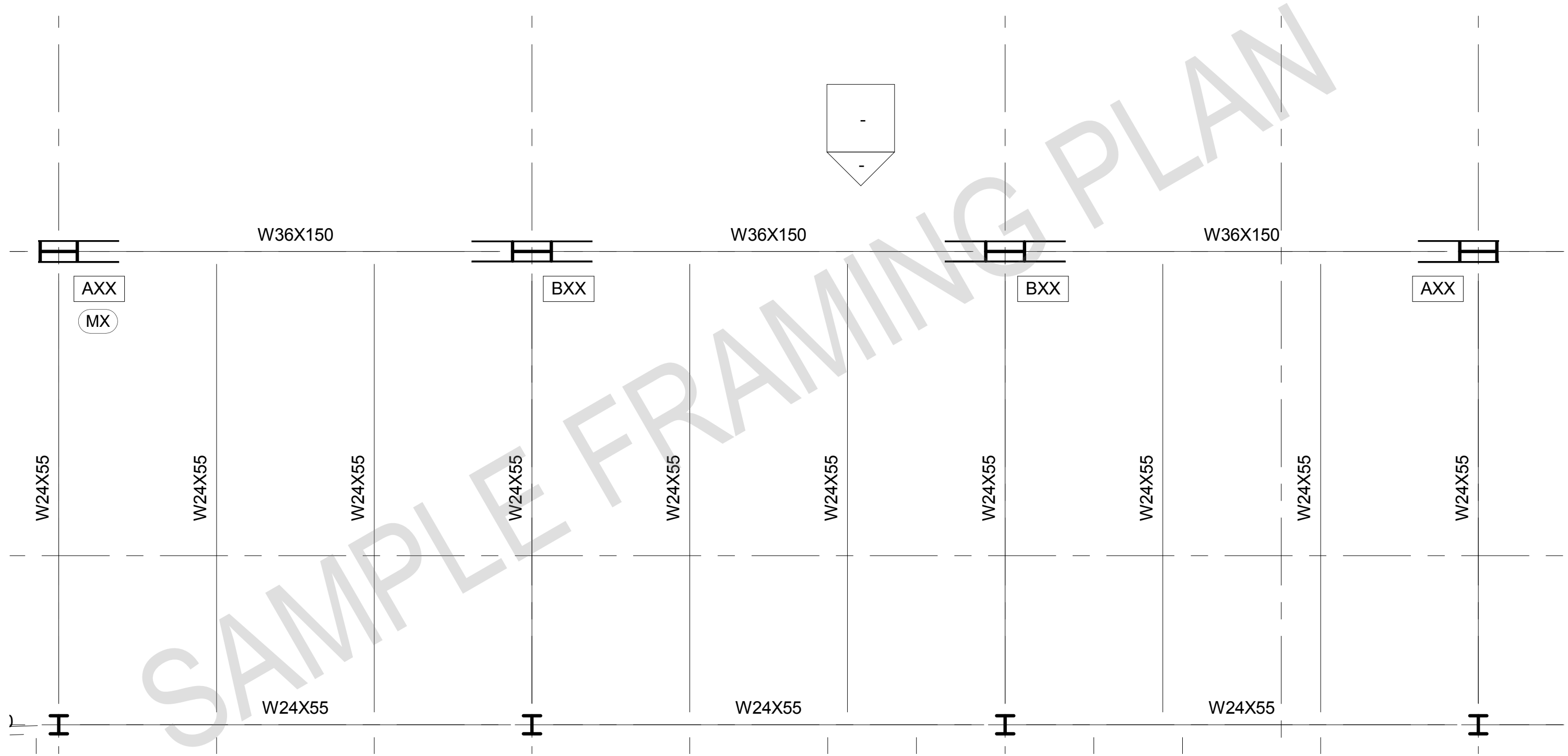
INDICATES MISCELLANEOUS SIDEPLATE DETAIL PER SHEETS X/XX - X/XX



SAMPLE PLAN
DETAIL LEVEL: COARSE
Protected Zones Visible

INTELLECTUAL PROPERTY RIGHTS NOTICE
 The SIDEPLATE® steel frame connection system is covered by one or more of U.S. Pat. Nos. 6,138,427; 6,516,583; 6,551,573; 7,178,296; 8,122,871; 8,122,872; 8,146,322; 8,178,706; 8,205,408; and 9,081,065 and foreign counterparts. Other U.S. and foreign applications pending.
 SIDEPLATE® is a registered trademark of Mitek Holdings, Inc., an affiliate of SidePlate Systems, Inc.
 Copyright © 2015 SidePlate Systems, Inc. All rights reserved. Without limitation, this drawing and the information hereon may be used only following payment of a license fee to SidePlate Systems, Inc. and for the design, construction, operation, repair, maintenance, restoration or demolition of the building(s) specifically identified.

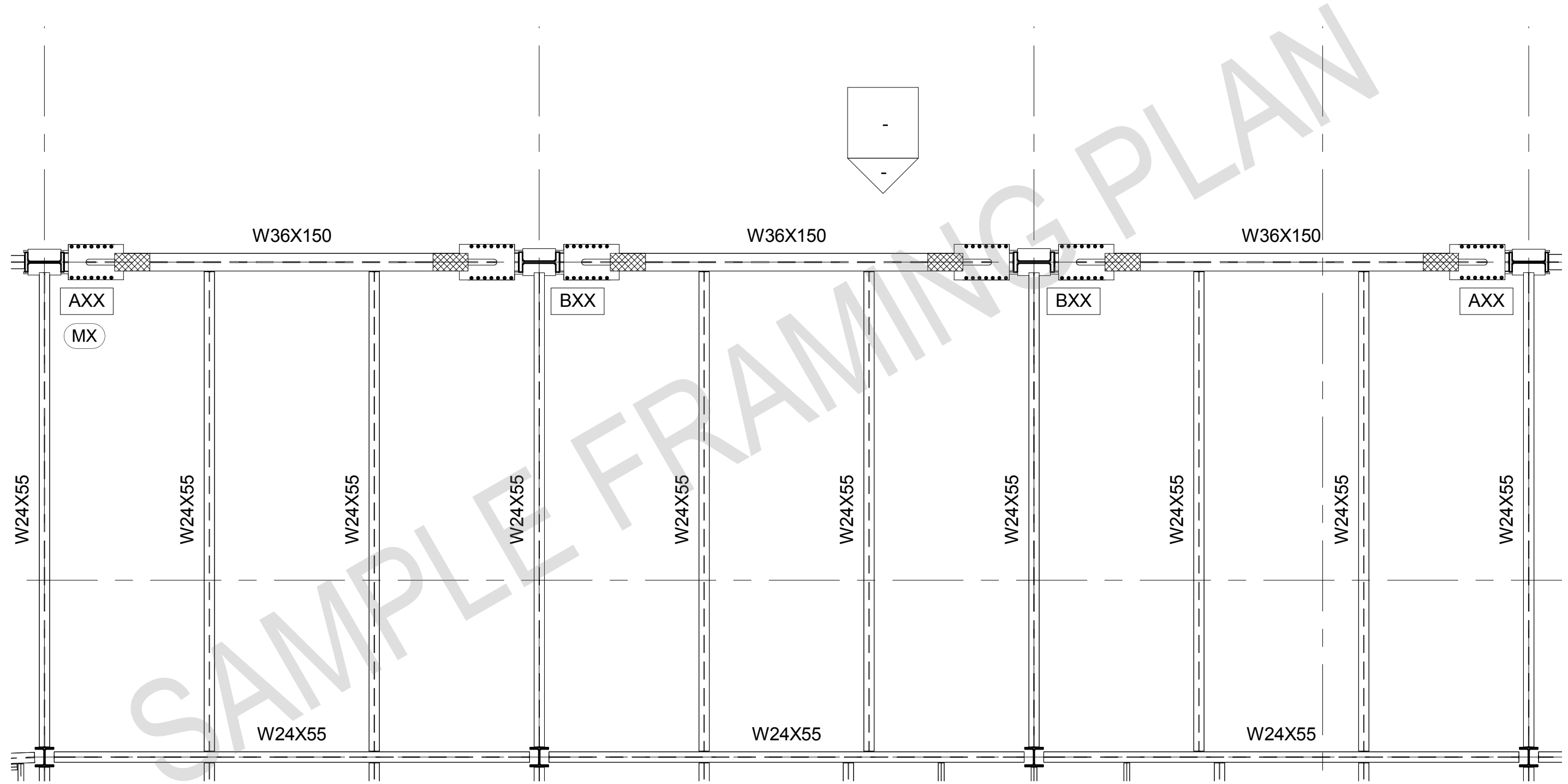
- AXX INDICATES SIDEPLATE CONNECTION PER SHEETS X/XX - X/XX
- MX INDICATES MISCELLANEOUS SIDEPLATE DETAIL PER SHEETS X/XX - X/XX



SAMPLE PLAN
DETAIL LEVEL: COARSE
No Protected Zones

INTELLECTUAL PROPERTY RIGHTS NOTICE
The SIDEPLATE® steel frame connection system is covered by one or more of U.S. Pat. Nos. 6,138,427; 6,516,583; 6,551,573; 7,178,296; 8,122,871; 8,122,872; 8,146,322; 8,178,706; 8,205,408; and 9,081,065 and foreign counterparts. Other U.S. and foreign applications pending.
SIDEPLATE® is a registered trademark of Mitek Holdings, Inc., an affiliate of SidePlate Systems, Inc.
Copyright © 2015 SidePlate Systems, Inc. All rights reserved. Without limitation, this drawing and the information hereon may be used only following payment of a license fee to SidePlate Systems, Inc. and for the design, construction, operation, repair, maintenance, restoration or demolition of the building(s) specifically identified.

- AXX INDICATES SIDEPLATE CONNECTION PER SHEETS X/XX - X/XX
- MX INDICATES MISCELLANEOUS SIDEPLATE DETAIL PER SHEETS X/XX - X/XX



SAMPLE PLAN
 DETAIL LEVEL: FINE
 Protected Zones Visible

INTELLECTUAL PROPERTY RIGHTS NOTICE
 The SIDEPLATE® steel frame connection system is covered by one or more of U.S. Pat. Nos. 6,138,427; 6,516,583; 6,551,573; 7,178,296; 8,122,871; 8,122,872; 8,146,322; 8,178,706; 8,205,408; and 9,081,085 and foreign counterparts. Other U.S. and foreign applications pending.
 SIDEPLATE® is a registered trademark of Mitek Holdings, Inc., an affiliate of SidePlate Systems, Inc.
 Copyright © 2015 SidePlate Systems, Inc. All rights reserved. Without limitation, this drawing and the information herein may be used only following payment of a license fee to SidePlate Systems, Inc. and for the design, construction, operation, repair, maintenance, restoration or demolition of the building(s) specifically identified.